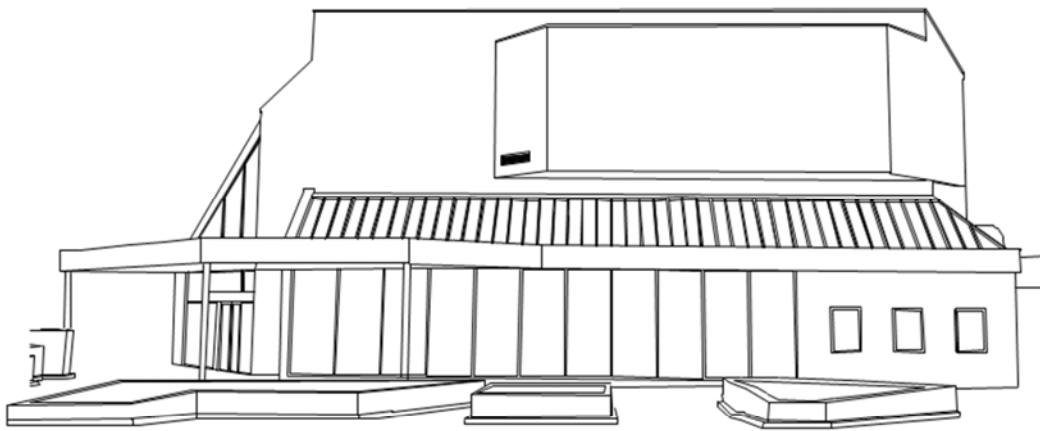




BASS COAST CULTURAL VENUES
THE UNION, WONTHAGGI

TECHNICAL SPECIFICATIONS

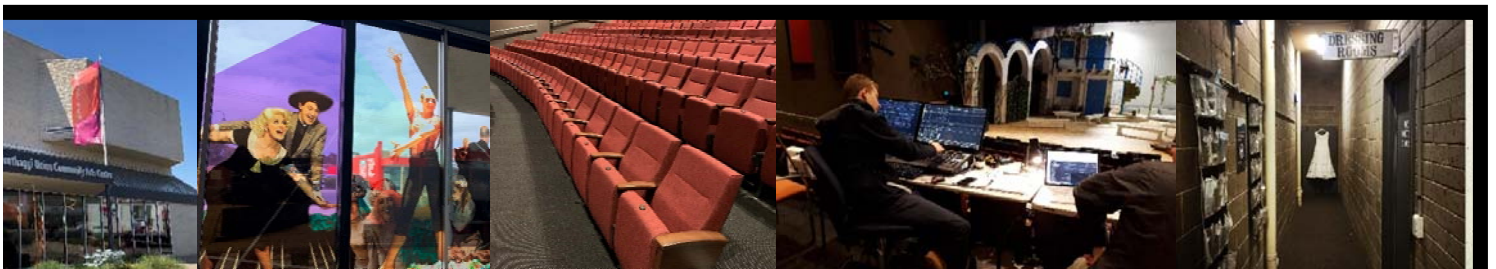
V4.1 SEPTEMBER 2023



96 Graham Street, Wonthaggi
Victoria, 3995

wonthaggi.artscentre@basscoast.vic.gov.au

www.wonthaggiartscentre.com.au





BASS COAST CULTURAL VENUES THE UNION, WONTHAGGI TECHNICAL SPECIFICATIONS

We acknowledge the Bunerong as the Traditional Owners and Custodians of the lands and waters, and pay respect to their Elders past, present and emerging, for they hold the memories, the traditions, the culture and lore.

Contents

Introduction	4
1. Auditorium	4
Theatre Capacity.....	4
2. Stage.....	4
Dimensions.....	4
Stage Floor.....	4
Stage painting.....	4
Stage Access/Egress	5
Orchestra Pit	5
3. Back of House.....	5
Disabled Access between BOH & Stage	5
Dressing Rooms.....	5
Green Room	6
Kitchen.....	6
Laundry.....	6
4. Sound and AV.....	6
System Control	6
Speakers/Amplifiers	7
Playback (Available on request).....	7
Projector.....	7
Microphones & DIs.....	7
Other Equipment.....	8
Communications	8
5. Lighting.....	9
Lighting Rig	9
Lighting Patching	11
Lighting Control	9
Dimmers and Patching	9
Additional Power	9
Fixtures.....	10
House Lights	11



BASS COAST CULTURAL VENUES THE UNION, WONTHAGGI TECHNICAL SPECIFICATIONS

Work lights	Error! Bookmark not defined.
6. Staging.....	11
Stage Cloths	11
House Curtain.....	12
Legs & Borders	12
MS & US Tabs	12
Cyclorama.....	12
Staging.....	12
7. Safety.....	12
Test & Tagging.....	12
Inductions.....	13
Wardens	13
Company Attendance.....	13
Incidents & Near Misses.....	13
First Aid Kits & Defibrillator.....	13
Fire Detection & Suppression System	13
8. Access Equipment	14
Height Safety	14
EWP (Elevated Work Platform)	14
Ladders.....	14
Loading Dock	14
Parking.....	14
9. Contact Information	15

Introduction

The Union (formally known as Wonthaggi Union Community Arts Centre) is managed by Bass Coast Shire Council. We provide a program of live performance including theatre, music and bands, cinema and community events. It is assumed a hirer has a production manager or technical head reading this specification sheet.

Please make contact with the event delivery supervisor at least 45 days prior to your performance to ensure a clear understanding between requirement and delivery. Changes and additions that require in-house technical support may incur additional staffing costs.

I. Auditorium

Theatre Capacity

The Union, Wonthaggi, is a proscenium arch theatre and can accommodate up to 402 patrons*. The theatre is wheelchair accessible and fully air-conditioned.

The theatre opens as a cinema during off peak show seasons and School Holiday periods.

If you require seats to be held for follow spots, additional sound, AV or lighting equipment or for filming video, this will reduce the number of seats available.

*Note Capacity limits subject to change in accordance with Government Regulations.

2. Stage

Dimensions

Width, wall-to-wall	19.15m
Depth, setting line -to- rear wall	9.75m
Height to underside of Proscenium Arch	8.84m
Width of Proscenium Arch	9.9m
Depth of Thrust Stage	3.3m
Width of Thrust Stage	8.7m
Width of Prompt Side Wing (OS Tab to Wall)	4.13m (w) Narrowest
Width of Opposite Prompt Side Wing (OS Tab to Wall)	2.01m (w) Narrowest

Stage Floor

Tongue and groove (hoop pine) timber on concrete stilts overlaid with tempered Masonite. Painted Scenic Studios Stage Black. Please consult with WUCAC technical staff before using fixings (screws or nails) to the floor or walls. Stage floor point loading 300kg

Stage painting

The Floor may be painted for the duration of your performance, however the stage must be painted back to standard before departure. Scenic Studios Stage Black paint must be used to return the stage to normal. Please do NOT use masking tape or painters' tape. Any painting from Arts Centre staff will incur a fee.

Stage Access/Egress

There is a corridor upstage of a wall behind the cyclorama that can be utilized as a cross-over.

Loading Access

- Loading dock roller door from rear lane. 2.72m (w) x 3.77m (h)
- Rear stage loading door from dock to crossover 2.19m (w) x 3.73m (h)
- Rear stage loading door from crossover to stage 3.69m (w) x 2.34m (h)

Orchestra Pit

The orchestra pit is located under the thrust of the stage and can be accessed via the small doors located in the DS PS Corner. The Pit includes a removable conductor lid in the DS Centre of the stage and Removable lids in the DS PS corner where the entrance is located. The utilization of the Orchestra pit will affect the stage and where sets are built, please contact us for more information.

3. Back of House

Disabled Access between BOH & Stage

Please Note*: There is no direct accessible/wheelchair access between the stage and Dressing/Back of House (BOH) areas.

Access is via a portable Lift which can be set up on the DS OP Corner. Access to the rear dressing rooms is through the public emergency exit, outside then into the green room entrance.

Dressing Rooms

Two dressing rooms available from the rear crossover, one upstairs one downstairs.

Dressing Rooms Each Consist of:

- Capacity 9 People Comfortably*
- Includes 1 Toilet, Sink and Shower
- Benches with 9 Mirrors and Lights
- Heating & Cooling

Back-of-house Understudy

This multipurpose space is a large open space can fit up to 30 people comfortably.

This room can be customized and set up in any configuration. The union offers tables, chairs and removable partitions allowing any configuration. Access is from the rear stage crossover, downstairs.

- Capacity 30 People Comfortably*
- Access to Male & Female Toilets
- Access to an additional dressing area for large events
- Heating & Cooling
- Access to the Green room and Kitchen Facilities
- Access to the Laundry



BASS COAST CULTURAL VENUES THE UNION, WONTHAGGI TECHNICAL SPECIFICATIONS

Green Room –

(The Green Room Door can also be considered STAGE DOOR)

Has direct access to the kitchen, toilets and Laundry.
Can also accommodate up to 12 people comfortably.

The Liquor License forbids us to all allow BYO backstage.

If you have alcohol as part of your hospitality rider, please get in touch in advance to cost and organize.

Kitchen

We provide a BOH kitchen to all hirers to use during their show season. All food supplies must be supplied by the hirer.

- Electric Stove/Oven
- Microwave
- Sandwich Press
- Toaster
- Fridge
- Dishwasher
- Boiling and filtered water.
- All crockery, cutlery, pots and pans.

All dishes, kitchen must be cleaned prior to departure. Should the kitchen remain unclean a cleaning fee will be on-costed to the hirer.

Please note, any activation of fire detection will result in charges to hirers account.

Smoking and vaping is also prohibited throughout the building.

Laundry

We provide a Laundry to all hirers to use during their show season.

- Washing Machine
- Dryer
- Iron and Ironing Board
- Steamer

4. Sound and AV

The Union is equipped with an advanced audio system sufficient for most productions and cinema sessions.

System Control

Control Console

Allen & Heath Avantis
64 Channel/42 Bus Digital Mixer
dPack installed
128 Dante Expansion Card

Patching

Allen & Heath DXI 68
[16 XLR Inputs, 8 XLR Outputs]
Fixed: Located on Prompt Side Stage AVR



BASS COAST CULTURAL VENUES THE UNION, WONTHAGGI TECHNICAL SPECIFICATIONS

Allen & Heath GX4816
[48 XLR inputs, 16 XLR outputs]
Allen & Heath DX168
[16 XLR Inputs, 8 XLR Outputs]
Portable

Backup/Extra Consoles **Allen & Heath QU32**
With 2x ABI68
QSC Touchmix 16

Speakers/Amplifiers

Speakers FOH **3 x EAW QX594i Speakers**
Located on above Pro Arch on wall
Left, Centre, Right

4 x EAW SB528 Dual 18" Subs
Located 2 either side of Pro Arch on wall

Delay **2 x EAW KF394 Delay Speakers**
Located above Row J

Amplification **Powersoft X8** (mids/highs/delays)
Powersoft X4 (subs)

Surround Speakers **Available for cinema only**

Fold Back **8 x EAW RSX12M 12" Self-Powered (Dante capable)**
2 x RCF 310A 10" Self-Powered

Playback (Available on request)

Items may be booked during your production meeting, or by telephone or email prior to your event

Digital Mac Book Pro - Running Qlab 4 (Audio & Vision)
iPad

Projector

Epson EB-G7905U Projector + fastfold screen

Microphones & DIs

Items may be booked during your production meeting, or by telephone or email prior to your event.

Type	Qty	Model
Direct Inputs (DI)	3	Radial PRO D2
	2	Radial PRO DI
	2	Radial J48 Active

	1	Radial Stage Bug
	2	Unika USB DI
	2	Leem DI
Handheld Microphones	4	Sennheiser e835
	2	Sennheiser e865
	1	Sennheiser e845s
	4	Shure SM57
	2	Shure SM58
Instrument Microphones	1	DPA 4099 (Stereo Piano Mics)
	2	Sennheiser e906
	4	Sennheiser e914
	4	Sennheiser e604
	1	Sennheiser e602-II
	4	Sennheiser e614
Shotgun Microphones		
	4	Sennheiser MKE400
Wireless Microphones		
	6	Sennheiser EW500 G3 Wireless Systems
	6	Sennheiser EW500 G3 Wireless Handhelds 5x 935 Capsules, 1x 835 Capsules, 2x 965 Capsules
	6	Sennheiser EW100 G4 Beltpacks (no lapels/headsets available)
	4	Sennheiser SKP 100 G4-B XLR wireless units

Other Equipment

Microphone Stands	8	K&M Tall Boom Stands (Black)
	8	K&M Short Boom Stands (Black)
	5	K&M Straight Round Base Stands
Personal Monitoring	6	Allen & Heath ME-1
Microphone & Audio Cables		Assorted
Lectern		Black with 2 x Lectern Microphones and Light

Communications

The Arts Centre is equipped with Jands/ASL communications System throughout the stage and BOH with a Jands E101 Master station located in the stage manager's desk.

The venue does not have a wireless communications system.

5. Lighting

Lighting Rig – Hanging Plot and Patch + Network schematic in appendices:

The Lighting Rig consist of FOH positions which can be accessed from 2 lighting bridges accessed from a set of stairs off the PS wall of stage or through the Bio Box. The Perch lighting bars can be accessed from a ladder in the auditorium.

On stage lighting bars are on flown winch bars with an approximate standard trim height of 6m.

All Lighting Bars have a WLL of 350kg, with 3 loading points equally spaced across the winched lighting bars.

Lighting Control

Control Console	<p>ETC Ion XE Console 16k <i>With 2 x 20 Fader Wing and 2 x Touch Screen</i></p> <p>ETC Nomad 4k (Backup) <i>Setup at Stage Managers Desk</i></p>
DMX Patching	<p>2 x ETC 4 Way Reponses MKII Gateway's <i>sACN Network (Universe 1 to 8)</i> <i>Fixed in Bio Box AV Rack</i></p> <p>2 x portable ETC 2 Way Reponses MKII Gateway's <i>sACN Network (Universe 9 to 12)</i></p> <p>4 x LSC 10 Way Data Splitters <i>RJ45 Connectors to patch into house system</i> <i>Fixed in Bio Box AV Rack</i></p> <p>1 x LSC 10 Way Data Splitters <i>5Pin XLR Connectors</i> <i>Portable</i></p>

Dimmers and Patching

Power patch bay and dimmers located on the fly floor which can be accessed from the stairs PS of stage.

Dimmers	4 x Bytecraft 12 channel (48 channels x 2.4KVA)
Power distribution	<p>2 x LSC GenVI 12 channel (12 channels x 2.4KVA)</p> <p><i>GenVI rack can be set to TruePower, creating either an Auto-on nondimmed outlet or a DMX controllable non-dimmed outlet.</i></p>

Additional Power

Fly Floor (Dimmers)	2 x Wilco 5 pin 50 amp 3 phase
---------------------	--------------------------------

Stage floor (PS Corner)
Bio Box

1 x Wilco 5 pin 32 amp 3 phase
1 x Wilco 5 pin 32 amp 3 phase

Fixtures

Standard Lighting Rig

Fixture	Description	Qty	Power	Type	Notes
Standard Rig Fixtures					
Chauvet Ovation E910FC	Zoom profile narrow (15ch)	9	220W	LED	
Chauvet Ovation E910FC 25-50	Zoom profile wide (15ch)	9	220W	LED	
Infinity S401 Spot ADV	Profile ML (37ch)	6	610W	LED	
Infinity iW741 RDM	Wash ML (20ch)	16	295W	LED	
Selecon RAMA LED	Fresnel (2ch)	10	120W	LED	
SL Par155 Zoom RGBW 16B	Zoom parcan (16ch)	20	150W	LED	
MYCYC PIXEL.2	Cyc floods(12ch)	6	180W	LED	
Source4 junior	Zoom profile 25-50	8	575W	Incandescent	
Selecon Pacific wide	Zoom profile 25-50	5	1000W	Incandescent	
Selecon Pacific narrow	Zoom profile 18-30	2	1000W	Incandescent	
Selecon Pacific 80W follow spot	Follow spot 7.5-19	2	80W	Incandescent	
Additional Fixtures					
Pixel bar 12*12 (24ch)	Pixel bar	4	150W	LED	
Showtec helix s5000 Q4	Floods	9	390W	LED	
iLED CycLED 144 RGBWA	LED strip	1	180W	LED	
Event Lighting Blinder RGBW	Blinder	3	235W	LED	
Selecon Axial Acclaim wide	Zoom profile 24-44	6	600W	Incandescent	
Selecon Acclaim Zoomspot wide	Zoom profile 24-44	8	500/650W	Incandescent	
Selecon Axial Acclaim narrow	Zoom profile 18-34	7	500/650W	Incandescent	
Prelude F	Fresnel	2	500/650W	Incandescent	
Acclaim PC	PC	12	500/650W	Incandescent	
Acclaim Fresnel	Fresnel	16	500/650W	Incandescent	
RAMA PC	PC	4	12000W	Incandescent	
Additional Equipment					
Unique 2.1	Hazer	1	1500W		
KI	Hazer	1			

Stands	For follow spots	5			
Boom bases		12			
Boom arms		50			
Floor Stands		10			

Lighting Patching

The Venue has two FOH bridges and 4 dedicated onstage flown LX bars.

Fixed bars

LX BAR	TRIM HEIGHT	DMX (5 PIN) outlets	CAT 6e outlets	LIGHTING CIRCUITS	PATCH NUMBERS
FOH 2	bridge	2	2	12	1-12
FOH 1	bridge	2	2	12	13-24
PS PERCH		2	1	6	25-30
OP PERCH		2	1	6	31-36

Motorized winch bars

LX1	~6m	2	-	18	37-54
LX2	~6m	2	-	12	55-66
LX3	~6m	2	-	12	67-78
LX4	~6m	2	-	12	79-90

Stage outlets

LOCATION	PATCH BAY	DMX (5 PIN) outlets	CAT 6e outlets	LIGHTING CIRCUITS	PATCH NUMBERS
Orchestra Pit PS	TP04	1	2	6	103-108
Orchestra Pit OP	TP05	1	2	6	109-114
DS OP	TP01	2	2	6	91-96
US OP	TP02	1	1	3	97-99
US PS	TP03	1	1	3	100-102
DS PS	TP06	1		6	115-120
DS PS	AVR PS			-	-
Fly Floor	TP101	2		-	-

House Lights

House lights are controlled either via the Lighting console or a Phillips Dynalite system located in various locations around the building. See patch sheets for universe/address details.

6. Staging; Rigging and Piano

All rigging in the venue must be installed and signed off by a licensed rigger.

Piano:

A baby Grand piano is housed on SR off stage. Please contact the venue if you require it to be tuned, well in advance of your production. It is a Yamaha C3 and includes a bench.

Stage Cloths

All curtains are hung off 50mm square battens and can be lowered in and removed or adjusted.
With the exception of the house curtain.
All Drapes must be treated with fire retardant and meet AS3959:2010

House Curtain

The house curtain can be controlled next to the SM Desk, Bio Box or Projection room.
The curtain is attached to a variable speed motor which can be adjusted by the venue technician.

5.5m (h) x 12m (w) with a split in the middle

Legs & Borders

Located on 5 bars consist of a set of black wool borders and legs. The legs can be adjusted to narrow or widen the stage.

Legs – 6m (h) x 3m (w) Variable
Borders – 2m (h) x 14m (w)

Midstage & Upstage Tabs

2 x Black Wool MS and US Tabs are hung off a manual tab track and can be controlled from the PS wing.

5.5m (h) x 12m (w) with a Split in the middle

Cyclorama

14m (w) x 6m (h) white gauze located on a winch bar.

Staging

Available for use:

6 of 1m x 1m x 400mm high stage pieces.

10 of 1 x 2M decs which can adjust at 200mm / 400mm / 600mm height.

Which can be joined make stage risers or platforms.

Equipment at no cost – additional tech support from inhouse staff may incur additional charges.

7. Safety

Test & Tagging

All portable electrical equipment provided by the venue is tested and tagged according to AS/NZS3760 Australian Standard

Any portable electrical equipment brought into the venue **must be** tested and tagged to this Australian

Standard.

Inductions

All hirers will be required to undertake a site safety induction prior to commencing any works at the venue. This site safety induction will be given by the supervising technician. Schools and large groups will be given a general safety induction on their arrival, this induction will be valid for the entirety of the hire only.

Wardens

The hirer's stage manager or a head delegate of the group will become the area warden for the BOH area. This person will be inducted on the warden procedure on arrival of their visit. The Warden will be in charge of marshalling their own company and BOH area in the case of an emergency and will be under the direction of the Chief Warden.

Company Attendance

The hirer is required to have a list of company attendee's that can be called on in the event of an emergency. This must be accessible by the hirer's stage manager or head delegate at all times.

Incidents & Near Misses

All incident and near misses must be reported to the Duty Technician / Duty Manager as soon as possible. A Bass Coast Shire Council Incident form must be completed, investigated and submitted by Bass Coast Shire Council staff.

First Aid Kits & Defibrillator

The Union theatre, Wonthaggi has two First Aid Kits and a Defibrillator available in the event of an emergency. We also have staff on site that can administer first aid if required.

First Aid Locations:

- Defibrillator and First Aid Kit: FOH in Box Office
- First Aid Kit: Project Space

Any use of First Aid equipment must be reported to BCSC staff as soon as possible.

Fire Detection & Suppression System

The venue is equipment with a fire detection and suppression system, which cannot be tampered with in any way. Including a sprinkler system above the stage.

The venue is equipped with a timed smoke detection isolation system for the use of atmospheric effects. Please consult the technical supervisor during your visit so the system can be isolated.

In the event that the fire alarm does activate, and it was deemed that the activation was caused by the hirer, the hirer will be liable for all cost associated with the attendance of the fire brigade.

8. Access Equipment

Height Safety

All workers working with ladders, EWP's and other height access equipment must be competent and suitably qualified for the task they are undertaking. Any scaffolding over 4m (platform height) must be built and signed off by a licensed scaffolder.

The use of the EWP (under 11m) requires a minimum yellow card and a EWPA yellow card. Any use of a Boom type EWP or EWP that can extend above 11m will additionally require plus a Work Safe high risk card (or equivalent).

EWP (Elevated Work Platform)

The theatre provides 1 x Quick Up Haulette, which has an 11.0m working height and is a push around vertical lift.

Ladders

We have a range of ladders throughout the venue.

Loading Dock

The Loading dock is accessed via the laneway (Hefford Lane) at the rear of the building. For large vehicles it is best to enter from Bass Hwy. The Arts Centre is the second last building on the left hand side before the end of the lane. The lane way is utilized by the public and must stay clear at all times.

There is limited access to large trucks. Any trucks larger than a HR class vehicle please contact the venue prior, to arrange alternatives. There is very limited room to reverse a vehicle directly onto the loading dock. A right-angled approach may be required. A dock lift is in place for loading in and out.

Parking

There is very limited long term parking in the area. We offer 3 car size parks at the rear of the building however these are not guaranteed and are subject to trucks loading and unloading.

Other Parking

- 1 hour parking along Graham Street, directly in front of the Arts Centre
- 3 hour parking in the car park directly across the road from the arts Centre next to the Wonthaggi Workmen's Club.
- All day parking along Watt Street.



BASS COAST CULTURAL VENUES THE UNION, WONTHAGGI TECHNICAL SPECIFICATIONS

9. Contact Information

Venue Operations Supervisor

Roxy Smith

venuehire@basscoast.vic.gov.au

Event Delivery Supervisor

Deb Hatton

eventdelivery@basscoast.vic.gov.au

Venue Technicians

Mark Drury and Mike Sammonds

venuetech@basscoast.vic.gov.au

Box Office & Marketing Officer

Jacqui Francis

venuemarketing@basscoast.vic.gov.au

General Enquires

03 5671 2470

cultural.venues@basscoast.vic.gov.au